



County: Morris
District: Butler Public School District
38 Bartholdi Ave
HS Annex
Butler, NJ 07405

Butler Public School District (27-0630)

2023-2024

Superintendent: Dr. Daniel Johnson

[District Website](#)

973-492-2025 x7401



1,182
Total Students



21.5%
Students with Disabilities



10:1
Student to Teacher Ratio



PK-12
Grades Offered



10.4 years
Avg Teacher Experience



6.8%
Multilingual Learners



26.0%
Economically Disadvantaged

The summary reports are meant to provide parents, educators, and communities highlights from the district, along with a high-level summary of how well a school or district is performing. We encourage you to use these reports to:

- **Learn more** about this school or district by viewing the detailed report. Use the link in the "Jump to" menu at the top right.
- **Start conversations** with school community members and ask questions. Use the one-page guides on the [Resources page](#) for suggestions.
- **Engage** with your school communities to identify where schools are doing well and where they can improve.

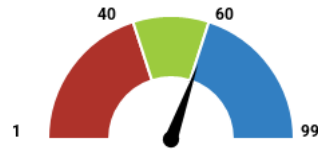
District Highlights Reported by the District:

- Our district works to incorporate our Vision for Learning established within our Portrait of a Graduate into our curriculum, activities, social/emotional learning efforts, and our culture and climate.

How does student growth compare to other students?

English Language Arts

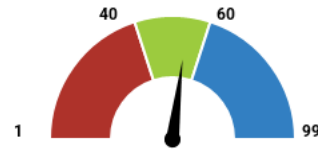
Below Standard: 1 - 39.5
Met Standard: 40 - 59.5
Exceeds Standard: 60 - 99



61
Exceeds Standard

Mathematics

Below Standard: 1 - 39.5
Met Standard: 40 - 59.5
Exceeds Standard: 60 - 99

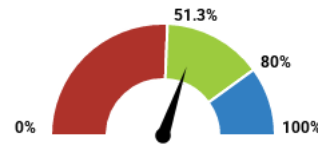


54
Met Standard

How did students perform on assessments?

English Language Arts

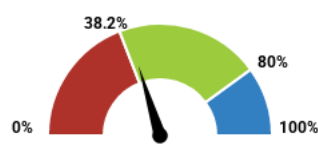
Below State: 0 - 52.1%
Met State: 52.2 - 79.9%
Met Goal: 80 - 100%



60.5%
Met State

Mathematics

Below State: 0 - 40.1%
Met State: 40.2 - 79.9%
Met Goal: 80 - 100%



40.5%
Met State

How to use this report?

1

Learn More by viewing this full report and reports for other schools and districts. Use the green menu bar at the top of the page to move between different sections of the report.

2

Start Conversations with school community members and ask questions. Use our guides for suggestions.

3

Engage with your school communities to identify where schools are doing well and where they can improve.



www.state.nj.us/education

www.njschooldata.org



reportcard@doe.nj.gov



County: Morris
District: Butler Public School District
38 Bartholdi Ave
HS Annex
Butler, NJ 07405

Butler Public School District (27-0630)

2023-2024

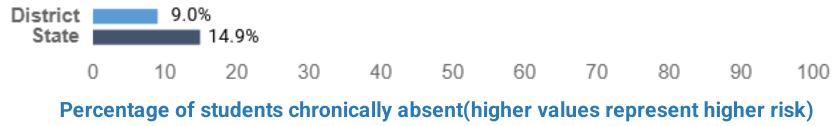
Superintendent: Dr. Daniel Johnson

[District Website](#)

973-492-2025 x7401

Are students at risk?

This section shows percentage of students who were absent for 10% or more of the days enrolled with a comparison to the state average.



Are students graduating?

This section shows the four-year and five-year graduation rates. These are the percentage of students who graduate high school within four or five years of entering high school.

Four-Year Graduation Rate

Below State: 0 - 91.2%
Met State: 91.3 - 94.9%
Met Goal: 95 - 100%



95.5%
Met Goal

Five-Year Graduation Rate

Below State: 0 - 92.5%
Met State: 92.6 - 95.9%
Met Goal: 96 - 100%



97.4%
Met Goal

Are students college and career ready?

AP/IB Courses: Percentage of 11th and 12th graders enrolled in one or more Advanced Placement (AP) or International Baccalaureate course (IB)



Dual Enrollment: Percentage of 11th and 12th graders enrolled in one or more dual enrollment course, which is a course that allows high school students to enroll in college courses for credit prior to graduation



Seal of Biliteracy: Percentage of 12th graders who earned the Seal of Biliteracy by demonstrating proficiency in English and one or more languages.



Industry-Valued Credentials: Percentage of 9th-12th graders who earned one or more industry-valued credential during the school year. Industry-valued credentials are recognized degrees, diplomas, certificates, or certifications awarded for an occupation.



How to use this report?

- Learn More** by viewing this full report and reports for other schools and districts. Use the green menu bar at the top of the page to move between different sections of the report.
- Start Conversations** with school community members and ask questions. Use our guides for suggestions.
- Engage** with your school communities to identify where schools are doing well and where they can improve.



www.state.nj.us/education

www.njschooldata.org



reportcard@doe.nj.gov